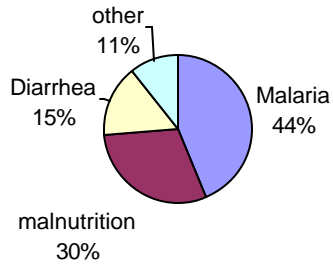
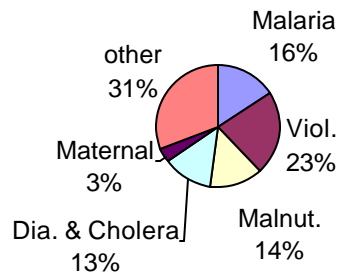


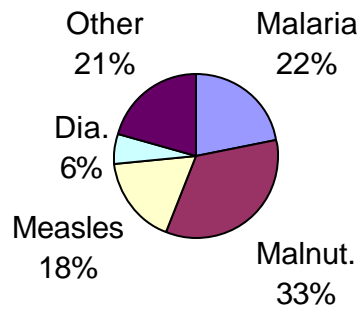
**Figure 1: Deaths among children <5 years, Kalemie 1/00 - 3/01, N=110**



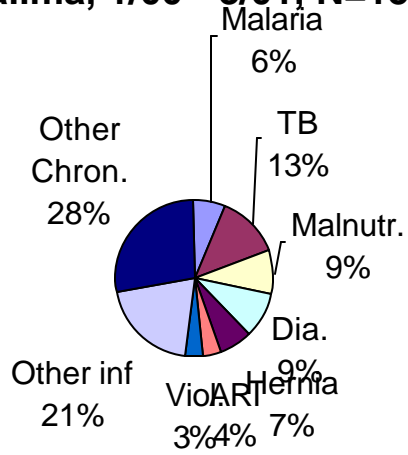
**Figure 2: Cause of Death among those >4, Kalemie 1/2000 - 3/2001, N=261**



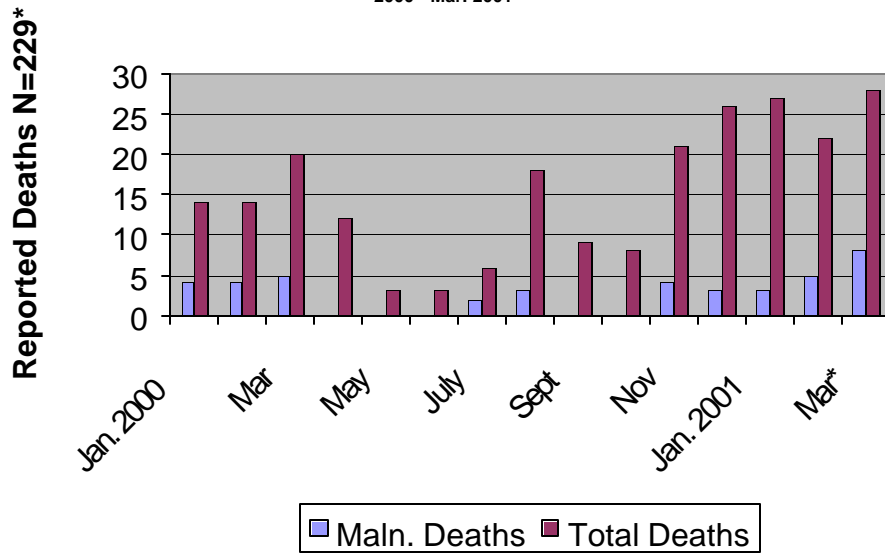
**Figure 3: Deaths among those <5 years, Kalima, 1/2000 - 3/2001, N= 68**



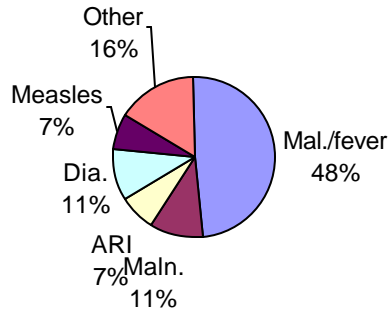
**Figure 4: Deaths among those >4,  
Kalima, 1/00 - 3/01, N=155**



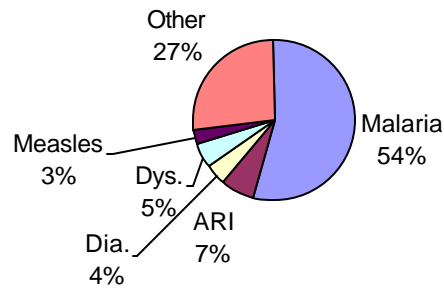
**Figure 5: Total Deaths and Deaths Attributed to Malnutrition: Kalima Health Zone. Jan. 2000 - Mar. 2001**



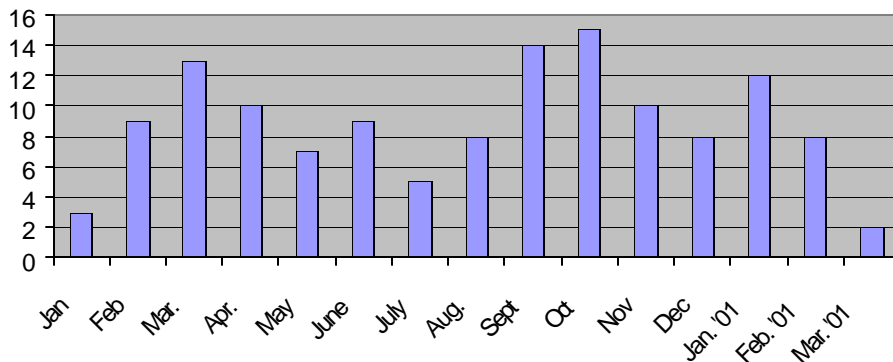
**Figure 6: Deaths among children <5, Katana, 1/00 - 3/00, N=110**



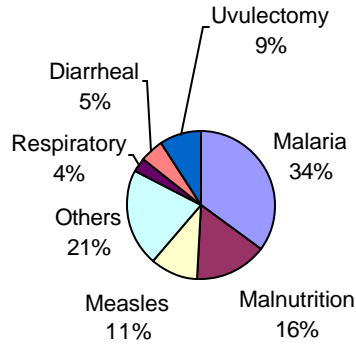
**Figure 7: Deaths among those >4, Katana, 1/00 - 3/00, N=110**



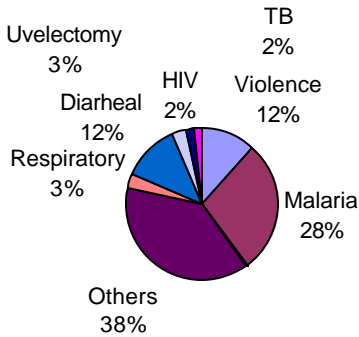
**Figure 8: Reported deaths by month in Katana, 1/00 - 3/01, N=131**



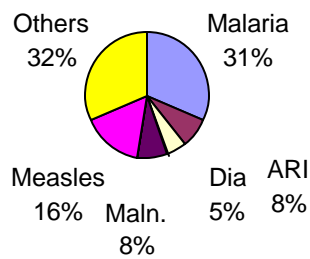
**Figure 9: Deaths among children <5, Kabare, 1/00 - 3/01, N=57**



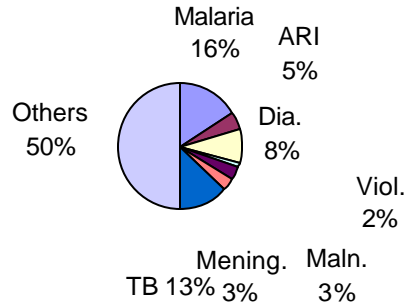
**Figure 10: Deaths among those >4, Kabare, 1/00 - 3/01**



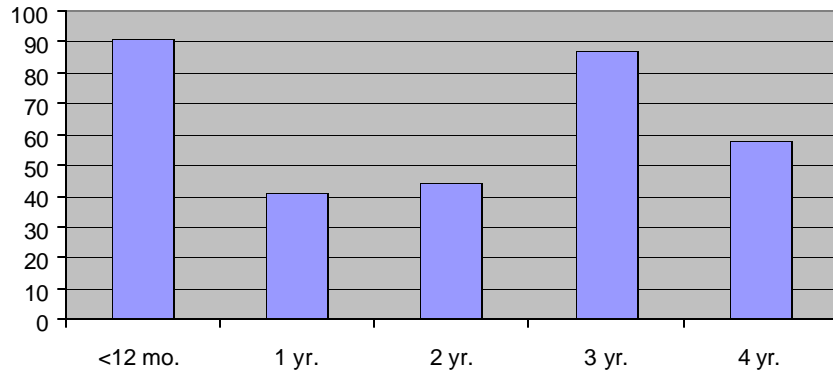
**Figure 11: Deaths among children <5, Lubunga, 1/00 - 4/01, N=38**



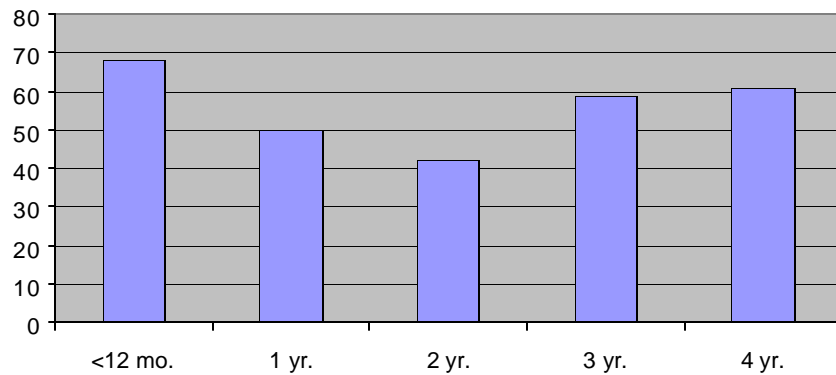
**Figure 12: Deaths among those >4, Lubunga, 1/00 - 4/01, N=62**



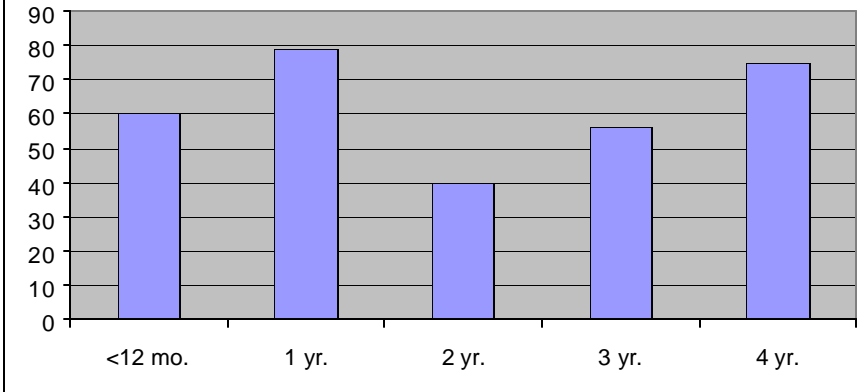
**Figure 13: Number of children by age, Kalemie, 3/01**



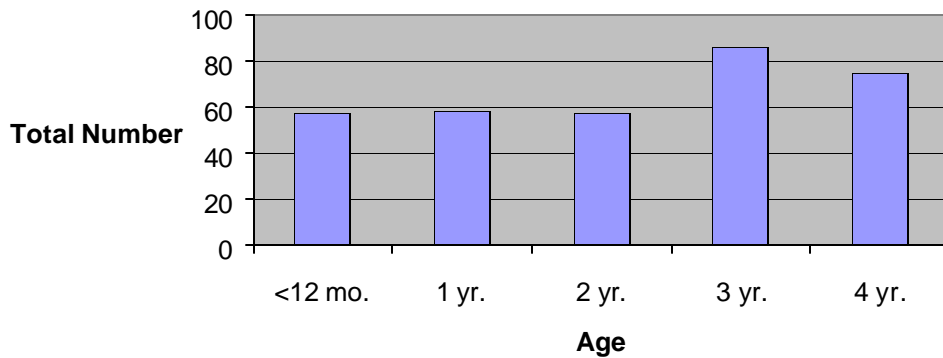
**Figure 14: Number of children by age, Kalima, 3/01**



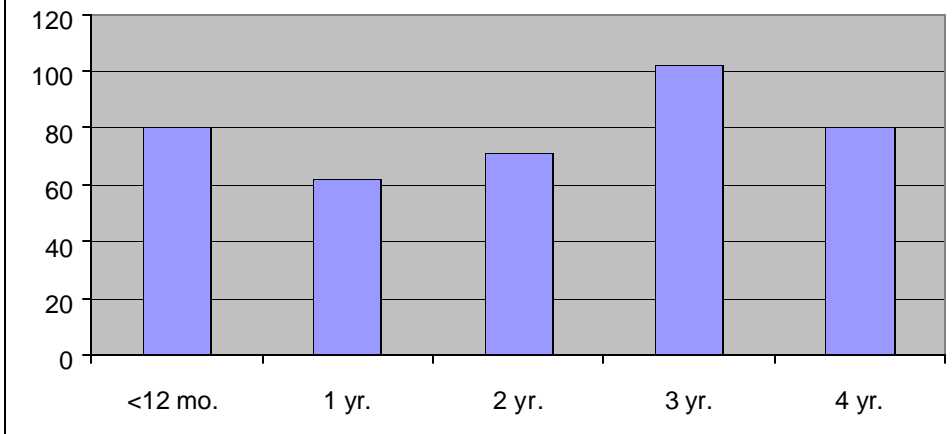
**Figure 15: Number of children by age, Katana, 3/01**



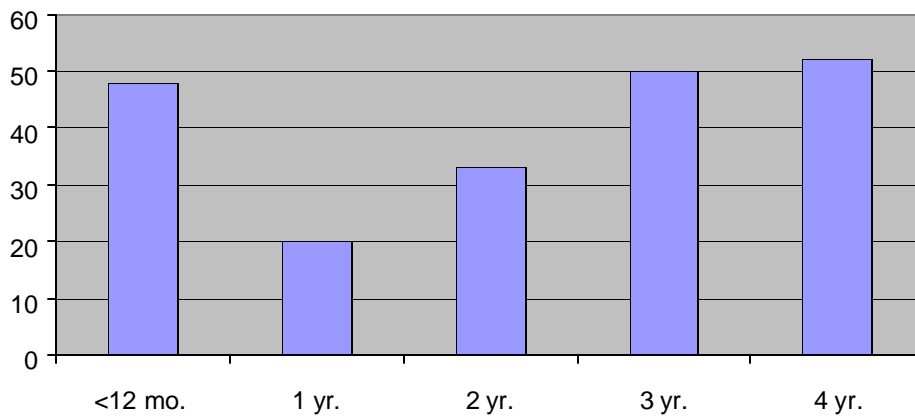
**Figure 16: Number of children by age Kabare 4/01**



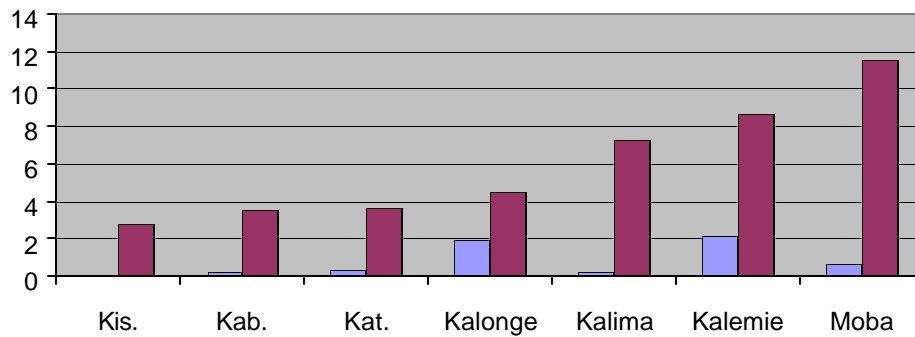
**Figure 17: Number of children by age, Lubunga, 4/01**



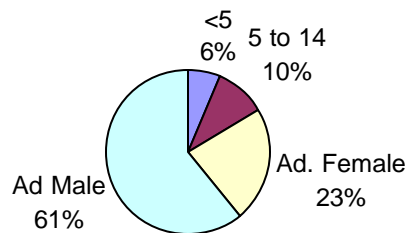
**Figure 18: Number of children by age, Lusambo, 3/01**



**Figure 19: CMR (deaths/1000/mo.) from violence and from all other causes (darker bars) in the 7 areas surveyed.**



**Figure 20: Violent deaths among interviewed HH by age and gender, N=140**



**Figure 21: Perpetrators of violent deaths as reported by interviewed HH, N=140**

